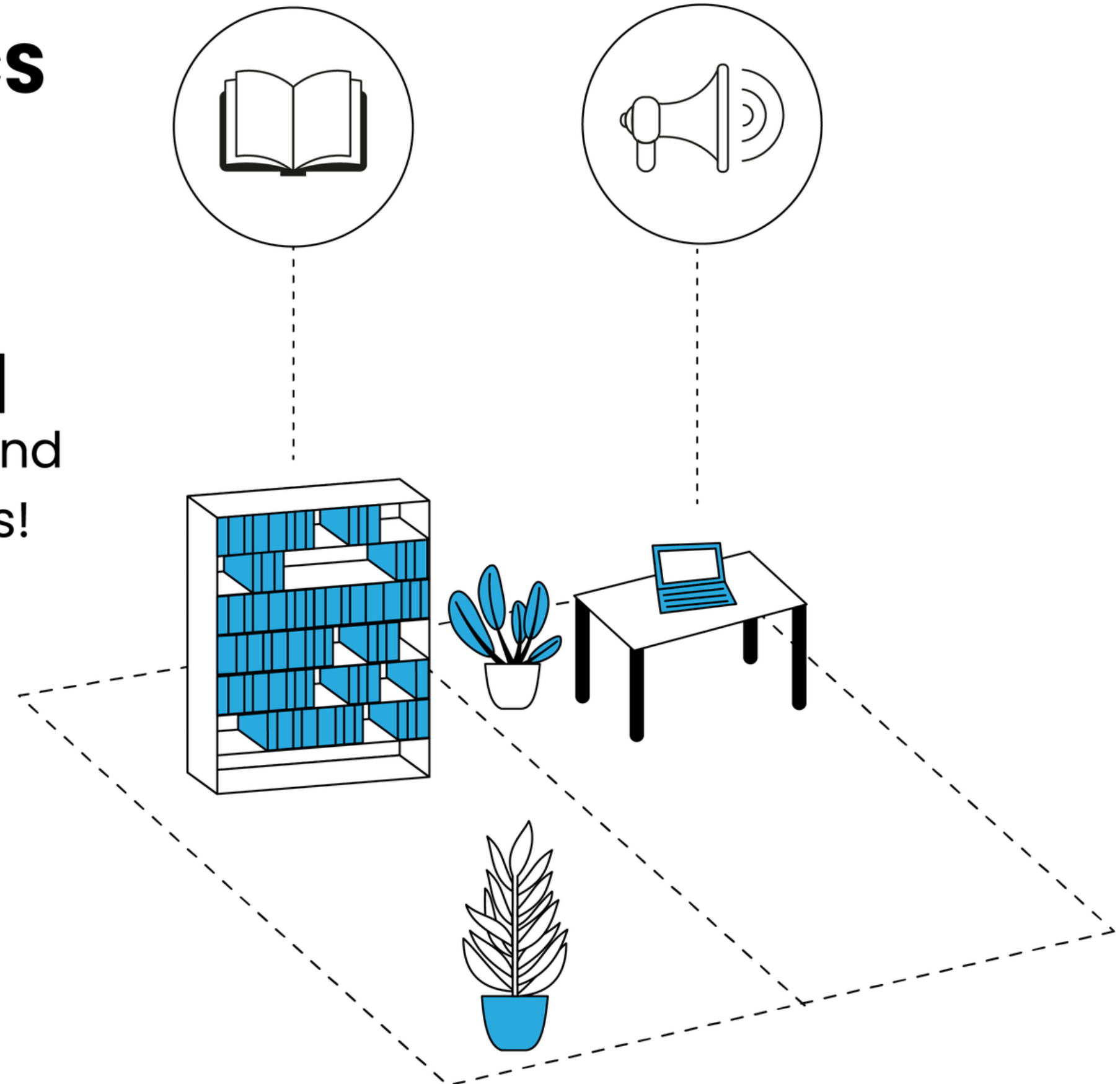


SUPPORT RESOURCES & INFRASTRUCTURE

HOW/WHERE TO ESTABLISH A CS CONTACT POINT, AND WHICH ARE ITS RESPONSIBILITIES?

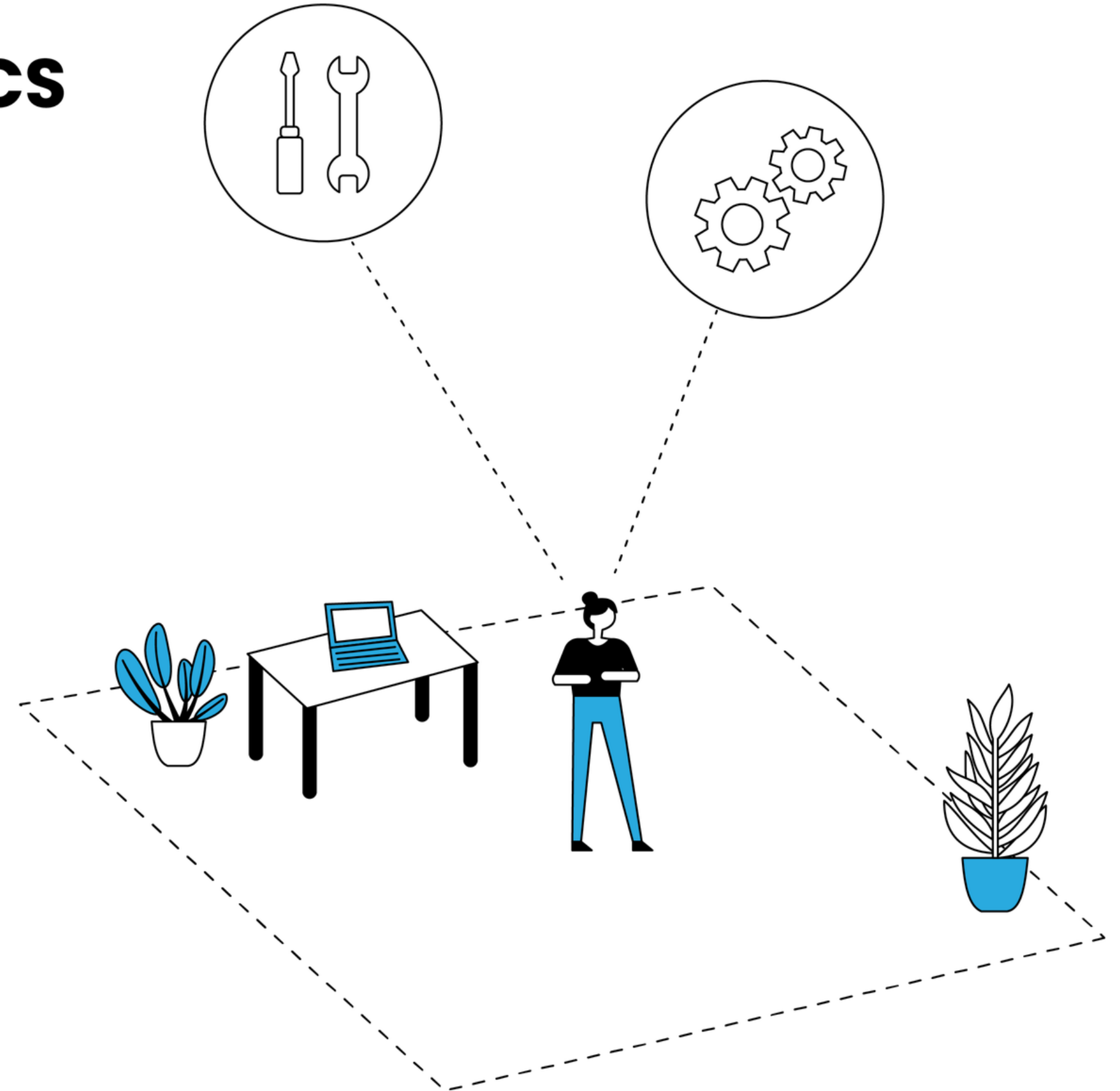
#1 Place your citizen science contact point in “neutral” areas! Libraries and communication offices are the best choices!



SUPPORT RESOURCES & INFRASTRUCTURE

HOW/WHERE TO ESTABLISH A CS CONTACT POINT, AND WHICH ARE ITS RESPONSIBILITIES?

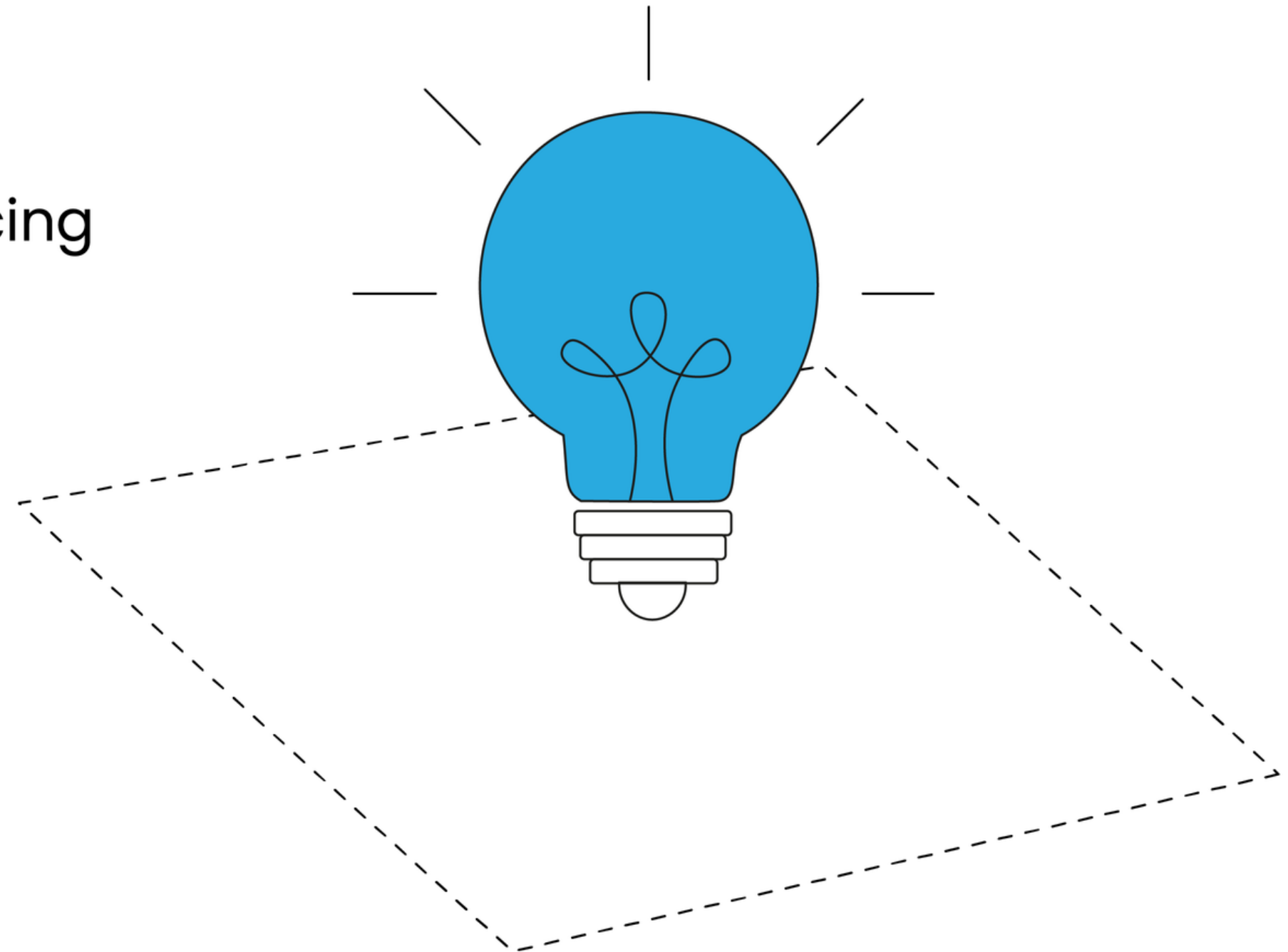
#2 Staff in the initial phase should include a person who provides support with the methodology and tools.



SUPPORT RESOURCES & INFRASTRUCTURE

HOW/WHERE TO ESTABLISH A CS CONTACT POINT, AND WHICH ARE ITS RESPONSIBILITIES?

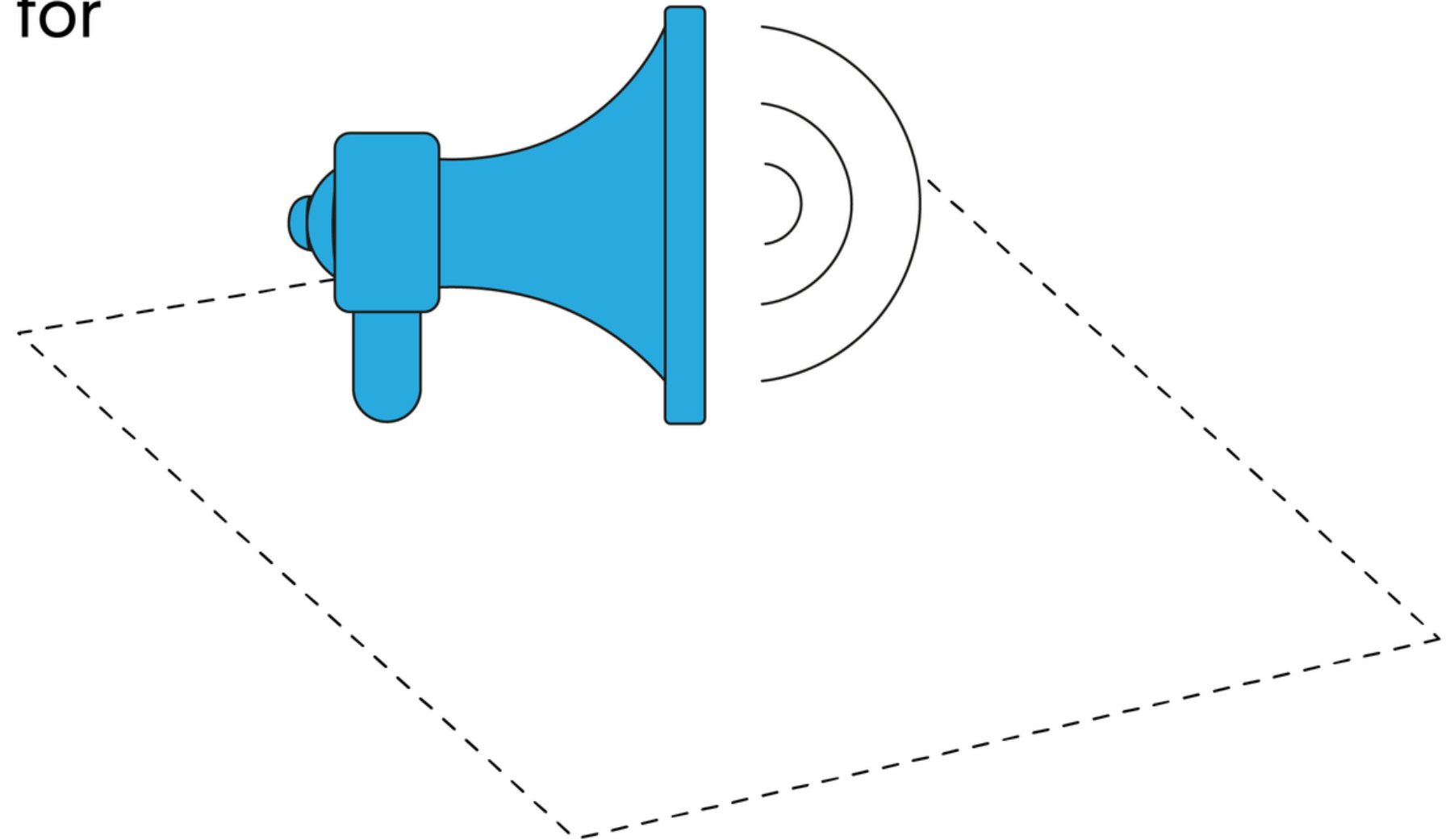
#3 For hiring, explore the easiest solution for your institution. Financing an administrative position might be easier than a research position.



SUPPORT RESOURCES & INFRASTRUCTURE

HOW/WHERE TO ESTABLISH A CS CONTACT POINT, AND WHICH ARE ITS RESPONSIBILITIES?

#4 It is important to make the potential of a citizen science contact point for your organisation appreciated. **Raising awareness internally is the key!**



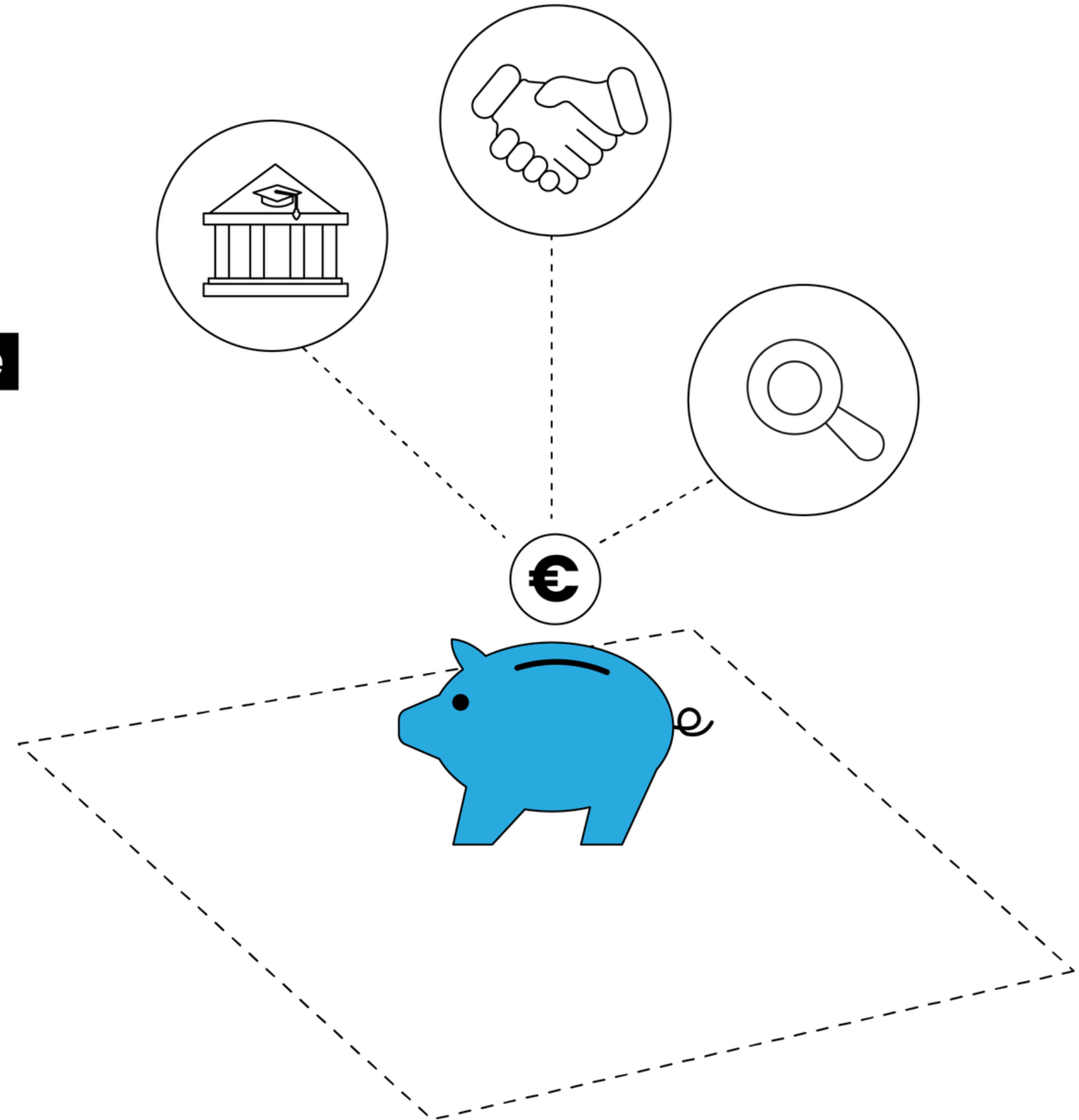
TIME4CS

#AskTheExpert

SUPPORT RESOURCES & INFRASTRUCTURE

HOW TO (SUSTAINABLY) FUND CITIZEN SCIENCE ACTIVITIES?

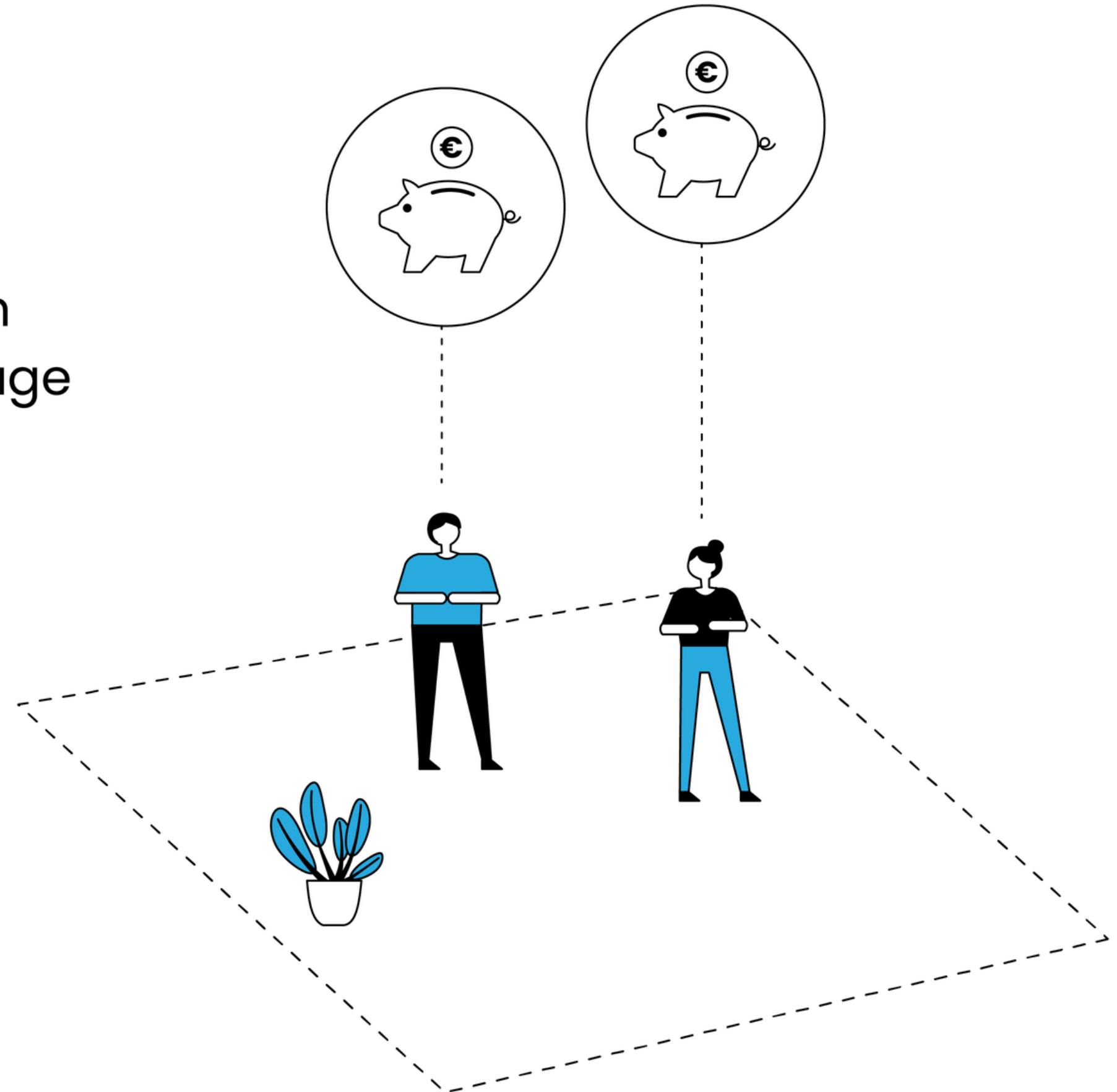
#1 Funds for citizen science can come from different sources, including universities, projects, international collaborations, local foundations, etc.



SUPPORT RESOURCES & INFRASTRUCTURE

HOW TO (SUSTAINABLY) FUND CITIZEN SCIENCE ACTIVITIES?

#2 Some of these funds can be given directly to researchers to encourage the implementation of citizen science activities.



SUPPORT RESOURCES & INFRASTRUCTURE

HOW TO (SUSTAINABLY) FUND CITIZEN SCIENCE ACTIVITIES?

#3 Citizen science activities bring more citizen science activities...and fundings! **There are increasingly EU and national funding opportunities specifically dedicated to citizen science.**

