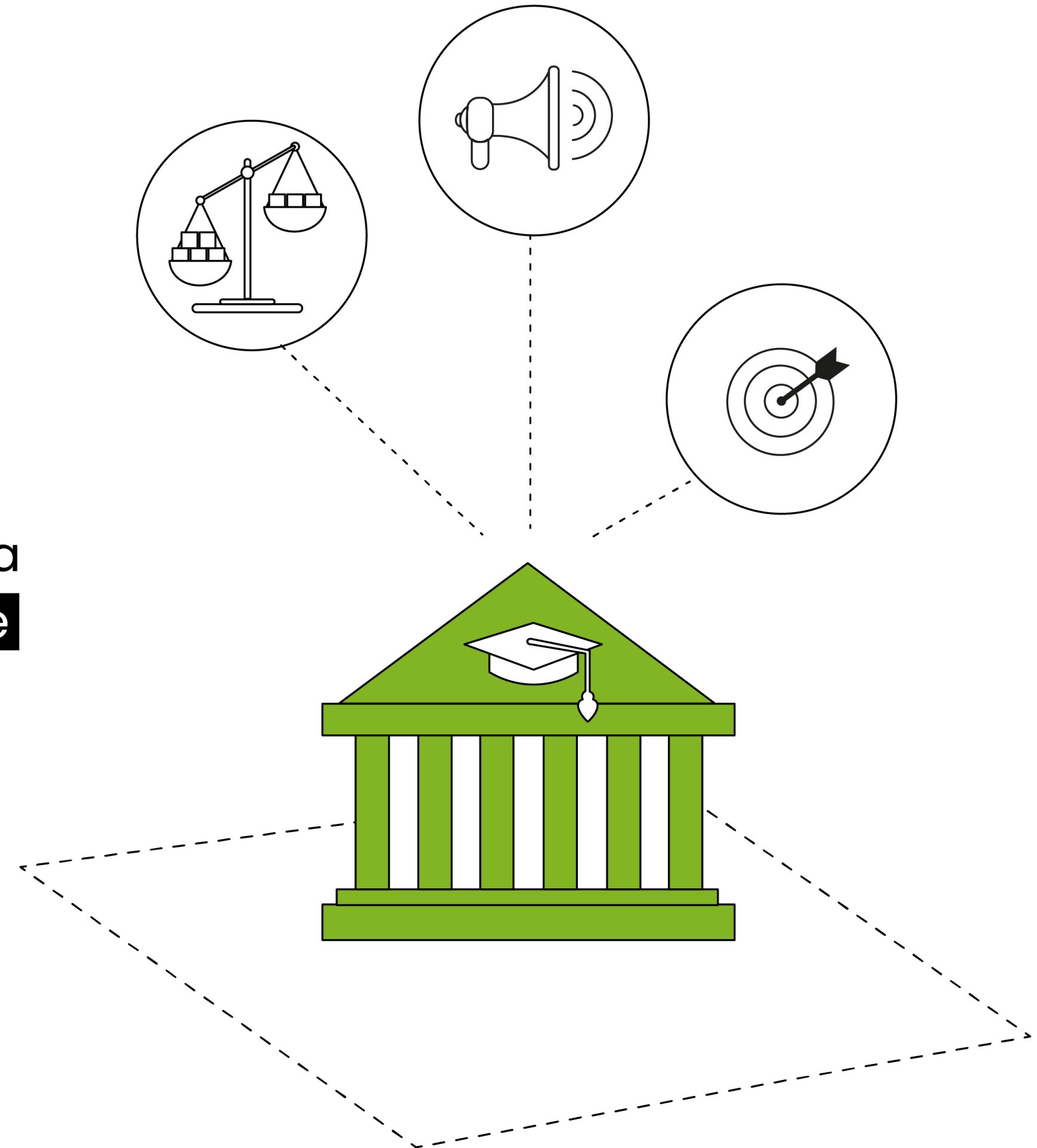


## EDUCATION

# ANY RECOMMENDATIONS FOR TRAINING? SOURCING OF ADEQUATE TRAINING COURSES/MATERIAL?

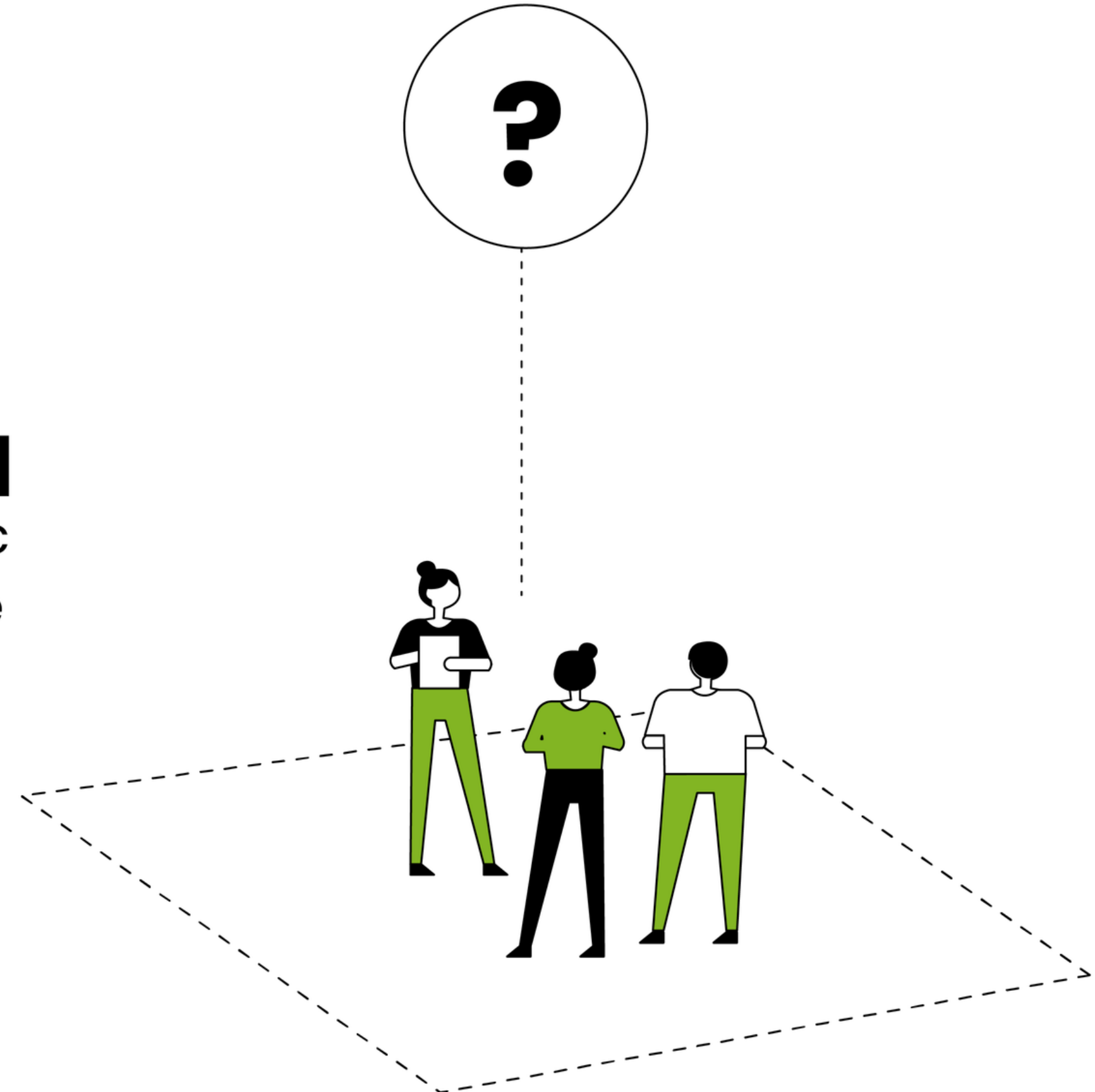
**#1** To convince your institution to set up a citizen science course, **think about the priorities of your institution** (e.g. promotion of scientific excellence) and show how citizen science can benefit it.



## EDUCATION

# ANY RECOMMENDATIONS FOR TRAINING? SOURCING OF ADEQUATE TRAINING COURSES/MATERIAL?

**#2** Probe the interest and motivation of **researchers** in citizen science, public engagement, and democratization of science by running informal interviews with them.



**TIME4CS**

**#AskTheExpert**

## EDUCATION

# ANY RECOMMENDATIONS FOR TRAINING? SOURCING OF ADEQUATE TRAINING COURSES/MATERIAL?

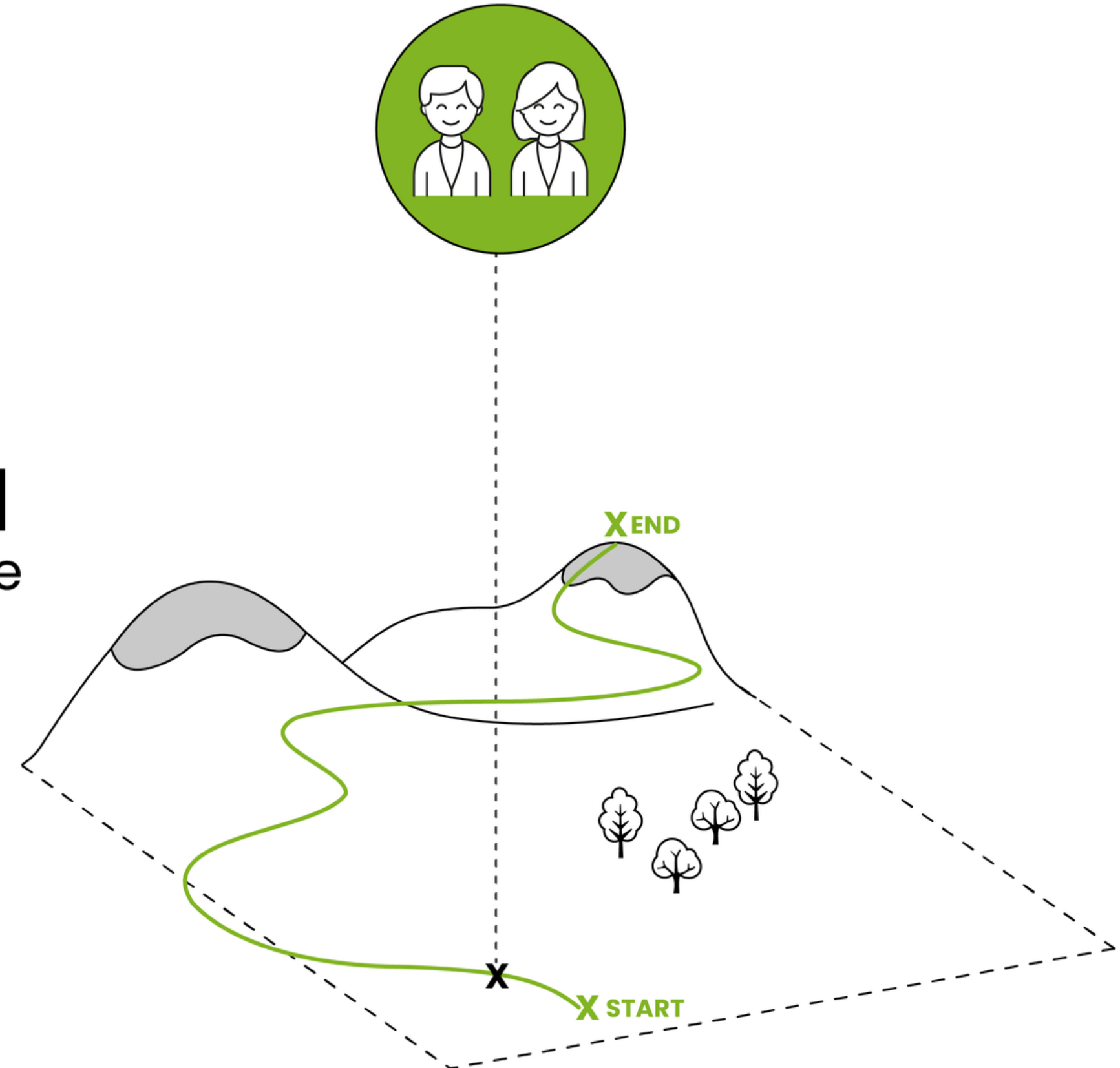
**#3** Start with proposing to **embed citizen science in existing courses** which already include parts on science communication, open science, and research integrity.



## EDUCATION

# ANY RECOMMENDATIONS FOR TRAINING? SOURCING OF ADEQUATE TRAINING COURSES/MATERIAL?

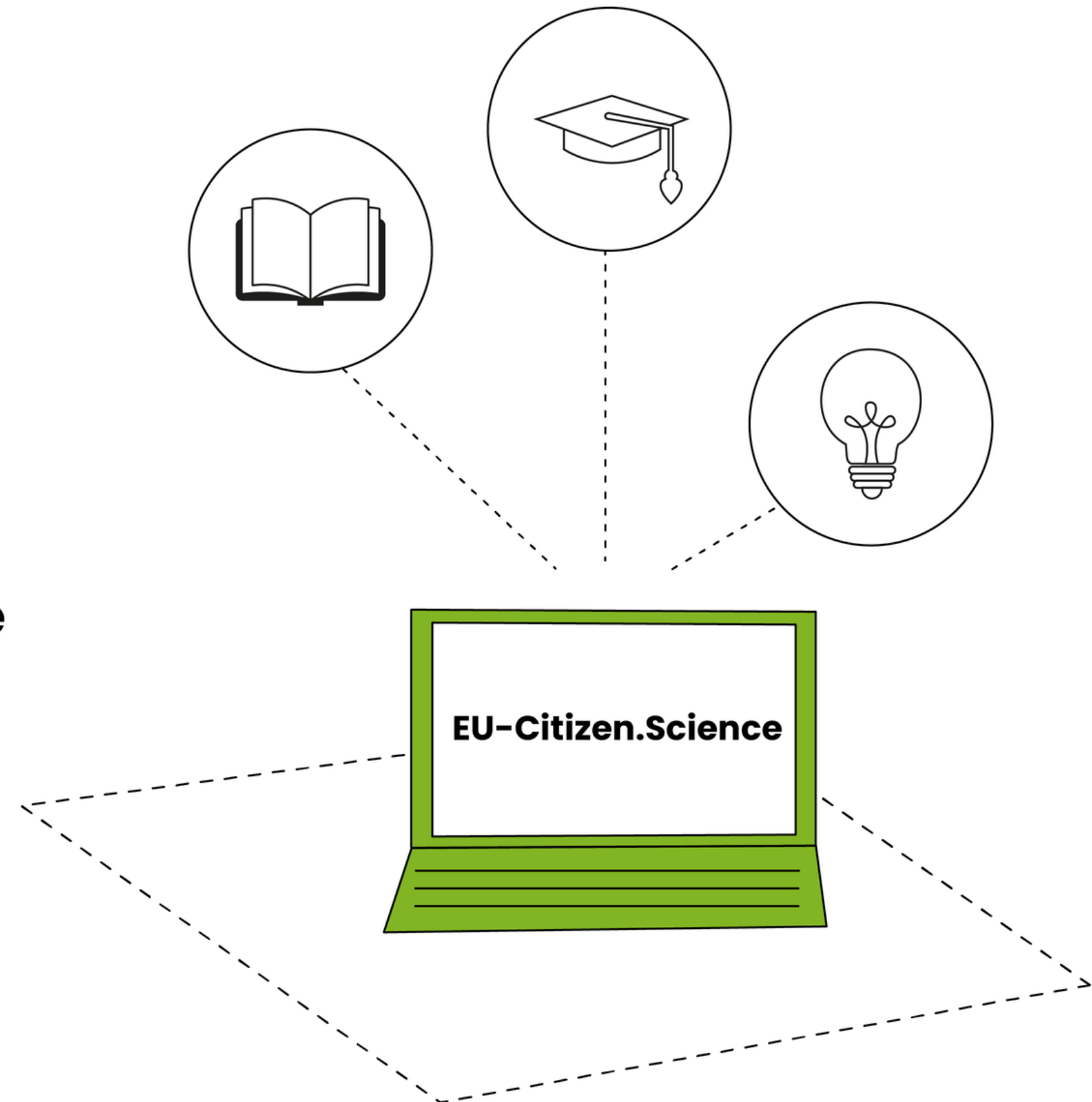
**#4** For PhD students, **offer a citizen science course as early as possible** in their career as implementing citizen science projects takes time!



## EDUCATION

# ANY RECOMMENDATIONS FOR TRAINING? SOURCING OF ADEQUATE TRAINING COURSES/MATERIAL?

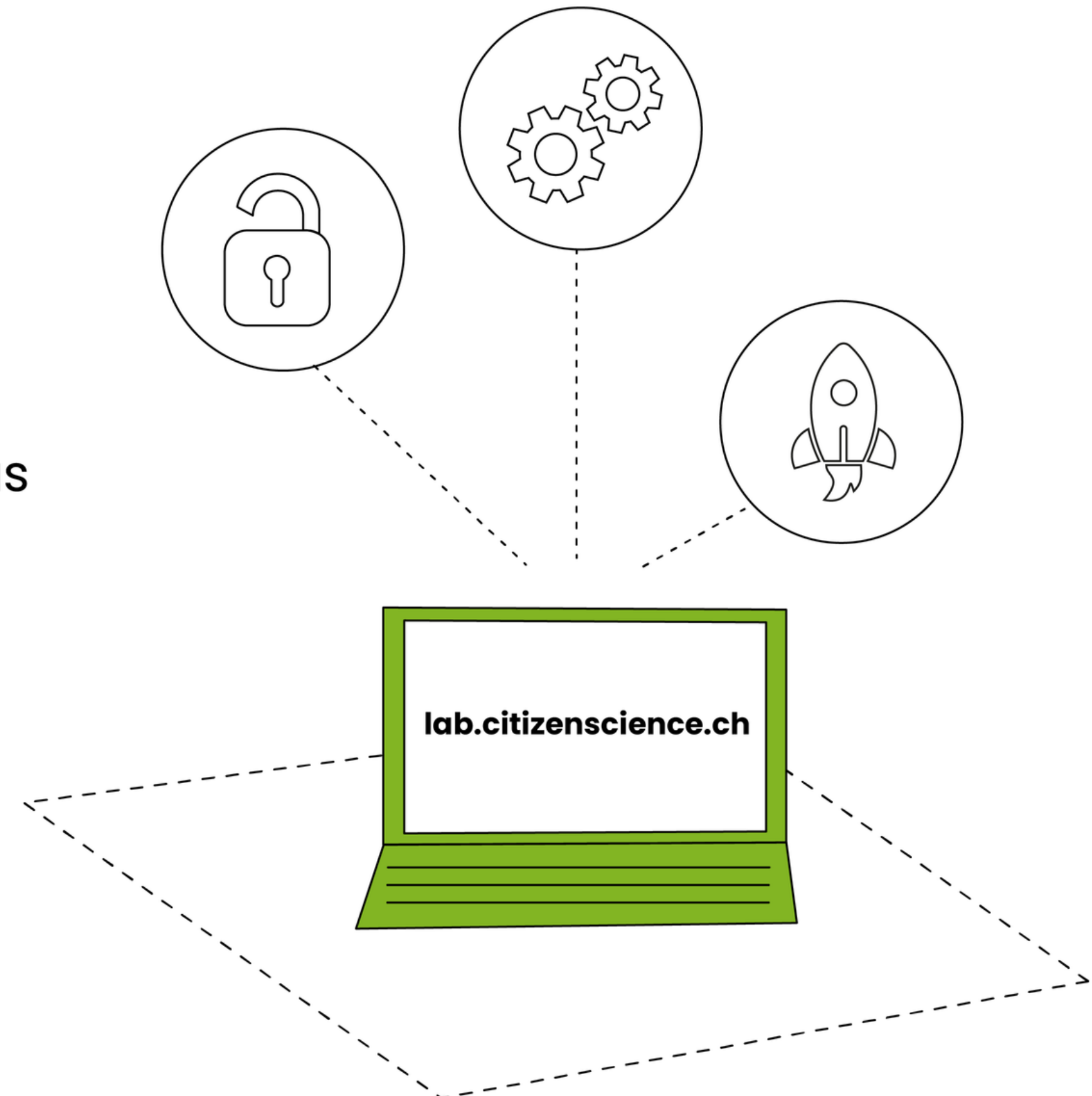
**#5** Benefit of already existing training material and courses, available on different platforms such as EU-Citizen.Science and other EU projects' platforms.



## EDUCATION

# ANY RECOMMENDATIONS FOR TRAINING? SOURCING OF ADEQUATE TRAINING COURSES/MATERIAL?

**#6** Use open-source platforms such as the tools offered by the Citizen Science Center Zurich.



**TIME4CS**

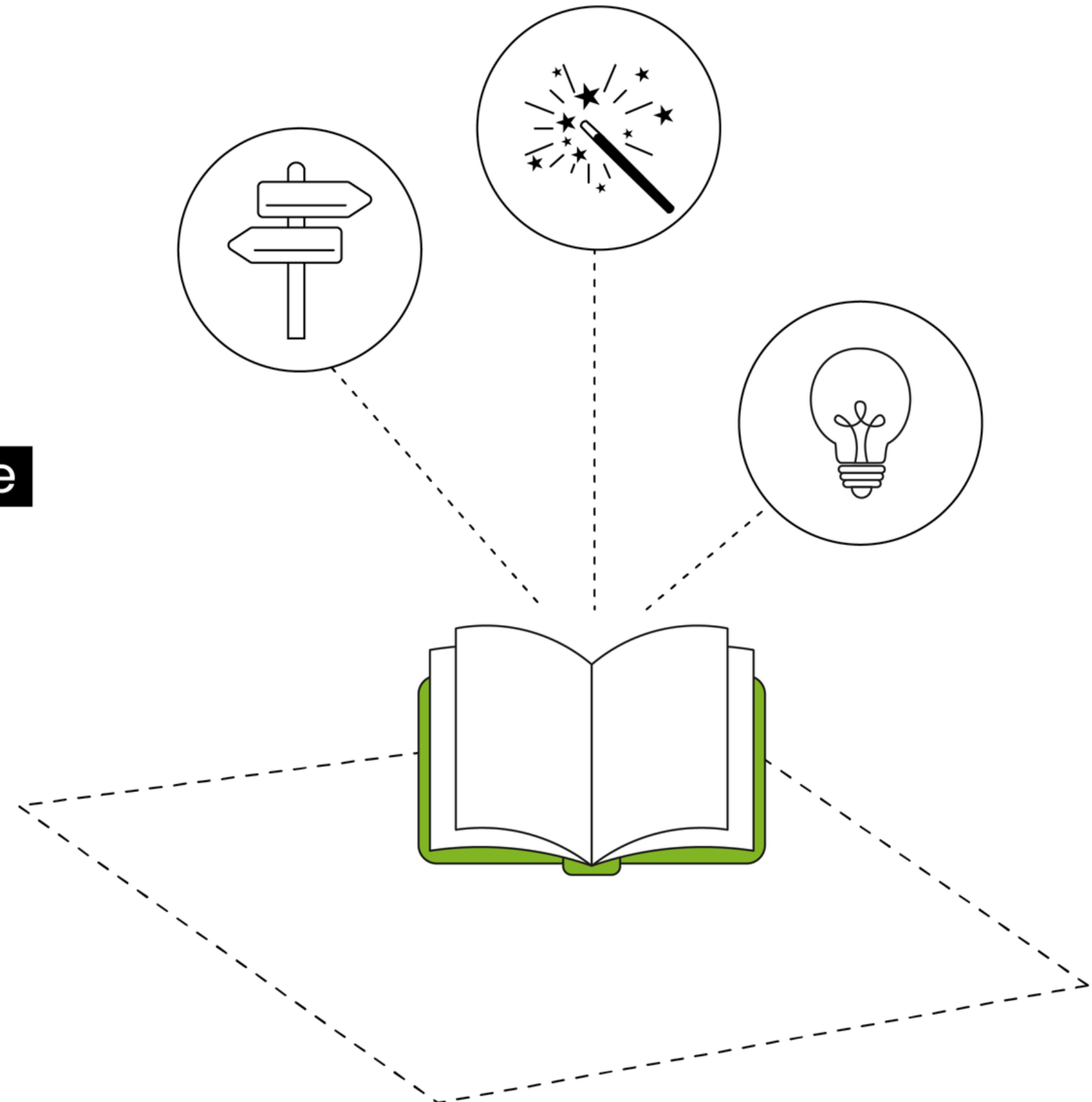
**#AskTheExpert**

## EDUCATION

# ANY RECOMMENDATIONS FOR TRAINING? SOURCING OF ADEQUATE TRAINING COURSES/MATERIAL?

**#7** Have a look at publications that give tips on how to use citizen science

appropriated as for example the Citizen Science Center Zurich's "CS handbook", and the Center for ecology and hydrology's guide.



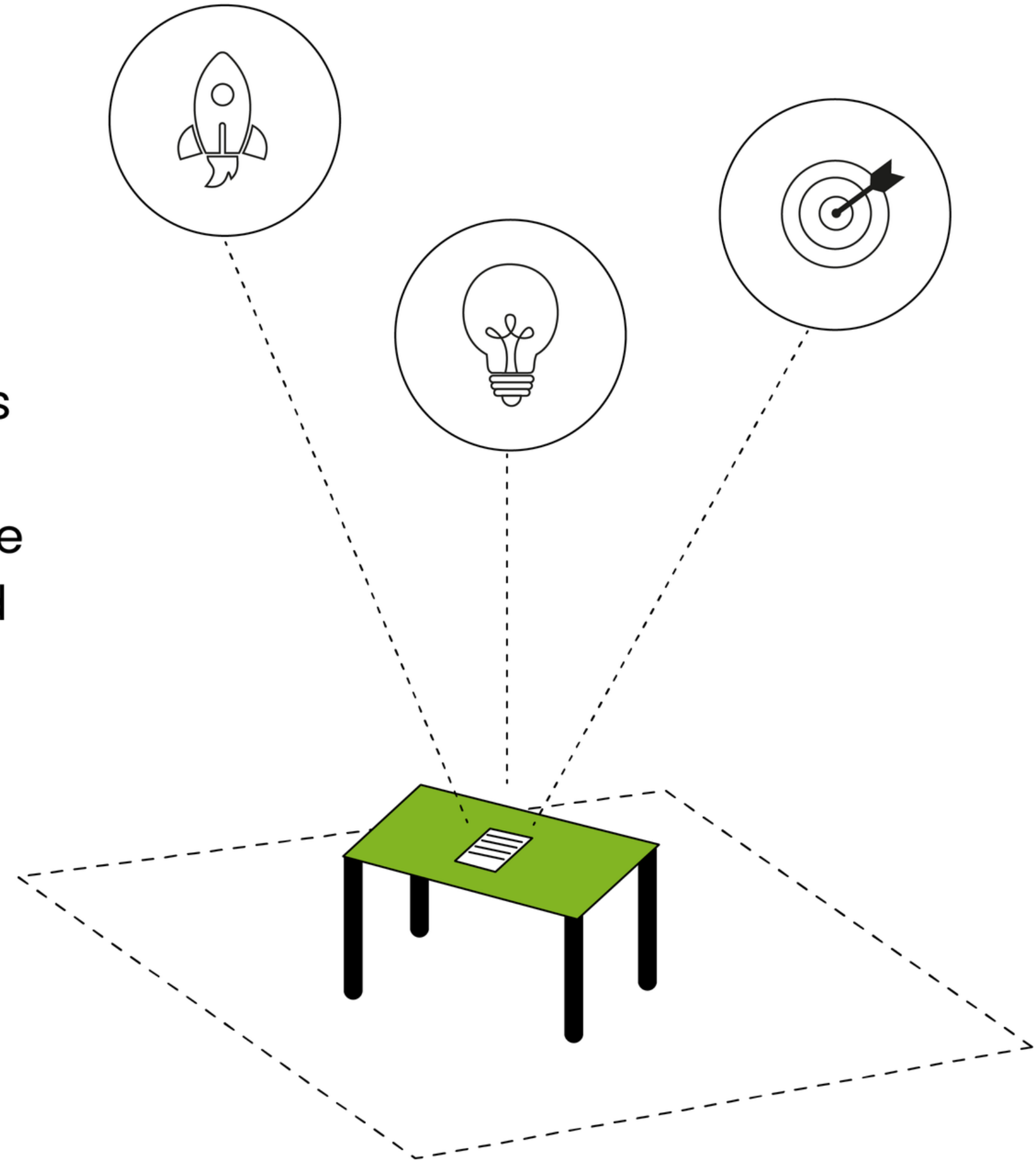
TIME4CS

#AskTheExpert

## EDUCATION

# HOW TO EVALUATE THE IMPACT OF NEW COURSES/TRAINING?

**#1** Use questionnaires to ask participants before the course about their motivations and interests, and after the course about their learnings, intentions, and acquired network. Repeat such questionnaires six months after the course to assess the long-term impact, including examples of how participants used the knowledge, what new contacts they made, follow up activities, etc.



**TIME4CS**

**#AskTheExpert**